



**DESIGN TRENDS 2023**



I VARIEGATI CIPRIA REGOLI



IBLA COLOFONIA

*trend:*

# SEDONA MODERNISM

Much like the desert skyline, the overall feel of sedona modernism is minimalistic and refined, yet boasting of natural earthen colors. Design lacks ornamentation and emphasizes functionality. Interiors are incorporating clean curves and monolithic pieces like arched door ways, rounded stairwells, and rubenesque sofas. Tiles in this story lean more warm toned, with terra cotta having a big moment. Textures in tiles are favored over bold patterns and high contrast.





NATUREL BLANC



NATUREL CLAIR FOGLIO



I VARIEGATI AVORIO

# ✱ PALETTE BUILDING

— SEDONA MODERNISM



- A. NATUREL BEIGE
- B. SEAMLESS ETOILE CREME
- C. IBLA COLOFINA
- D. I VARIEGATI COTTO/AVORIO
- E. I VARIEGATI CIPRIA REGOLI

- F. UNIQUE TRAVERTINE WHITE VEIN
- G. NORR OKEN
- H. MAND BIANCO DAWN
- I. UNIQUE TRAVERTINE WHITE RULED



SANDIA VERDE



PAPER41 LUX LOUIS

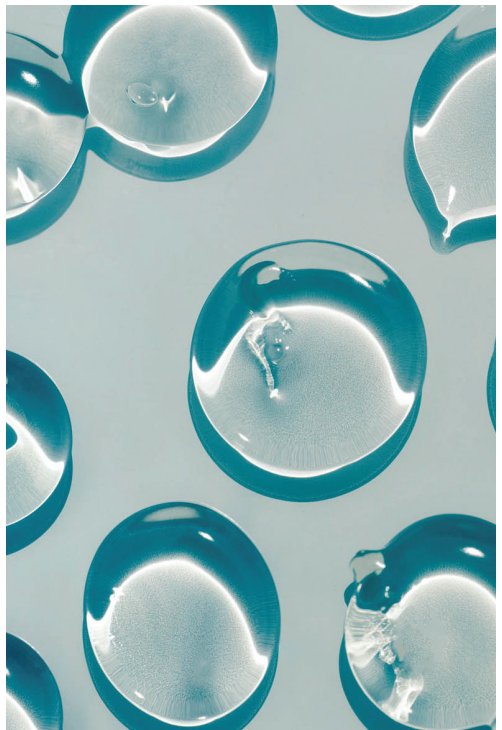


RAGNO CORSICA GRIGIO

*trend:*

# BIOMES

Biomes is a story that elevates the traditional idea of biophilia and explores the possibilities of the healing power of nature. Wellness continues to be impossible to ignore as a macro trend, and we're seeing that influence our design choices and interiors. Spaces have a clinical approach and feel clean, fresh, and rejuvenating. While emerald greens continue to be a strong color choice for 2023, this trend introduces the option of using mintier, lighter greens as a part of an airy color palette with whites, blues, and light natural wood tones.



# PALETTE BUILDING ✱

BIOMES

---



A. **SEAMLESS** ETOILE ILLUSION  
B. SANDIA VERDE, BEIGE, BIANCO  
C. **ODDH** COPAHU  
D. **SOL** PIUMA BIANCO

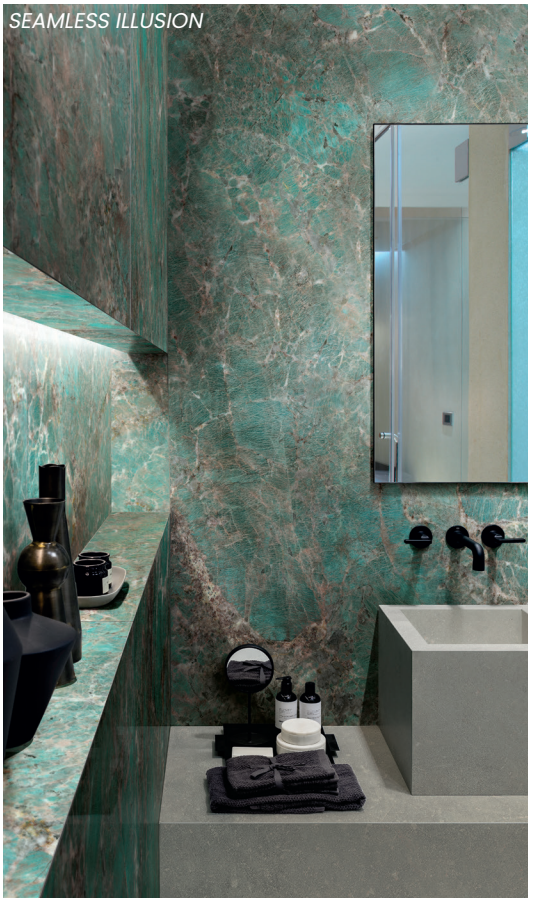
E. **GENESIS** ICE  
F. **EBONY & IVORY** QUARZO  
G. **PASTELLI** RUSCELLO  
H. **ELEGANCE PRO** WHITE MURAL

---





SOL VERDE FOGLIA



SEAMLESS ILLUSION



ELEGANCE PRO WHITE

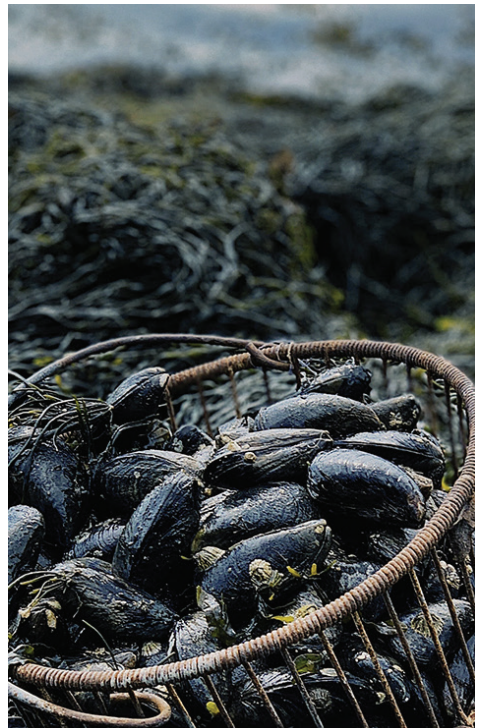


*trend:*

# COLD COAST

In 2023, we'll see a shift away from 'coast' being defined by sandy beaches and island vibes. Coastal reimaged: a grittier story with more contrast and deeper colors.

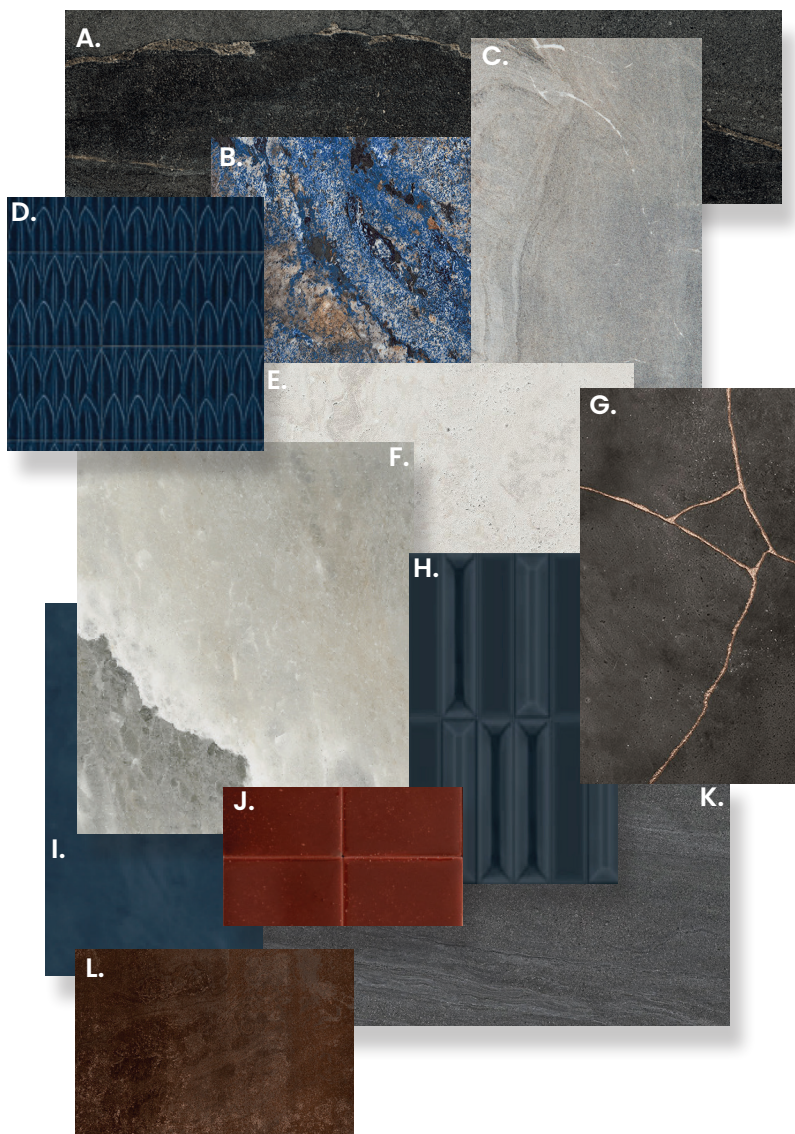
Imagine coasts off of Maine and Norway, battered fishermen braving the harsh challenges of the sea, and Americana blues. Rock Salt, Join, and Bethesda come together with new lines like Elegance Pro and Ibla to create a well rounded palette.



# PALETTE BUILDING ❄️

COLD COAST

---



- A. **IBLA NERA**
- B. **GRANUM BLU**
- C. **BETHESDA GREY**
- D. **SOL FOGLIA BLU**
- E. **UNIQUE TRAVERTINE SILVER MIN**
- F. **ROCK SALT DANISH SMOKE**

- G. **KINTSUGI HIBI BLACK**
- H. **FLAUTI CHARCOAL**
- I. **JOIN INK**
- J. **MURANO ROSSO**
- K. **ELEGANCE PRO ANTHRACITE**
- L. **SEAMLESS FLOWTECH BURNISHED**



SEAMLESS FLOWTECH BURNISHED



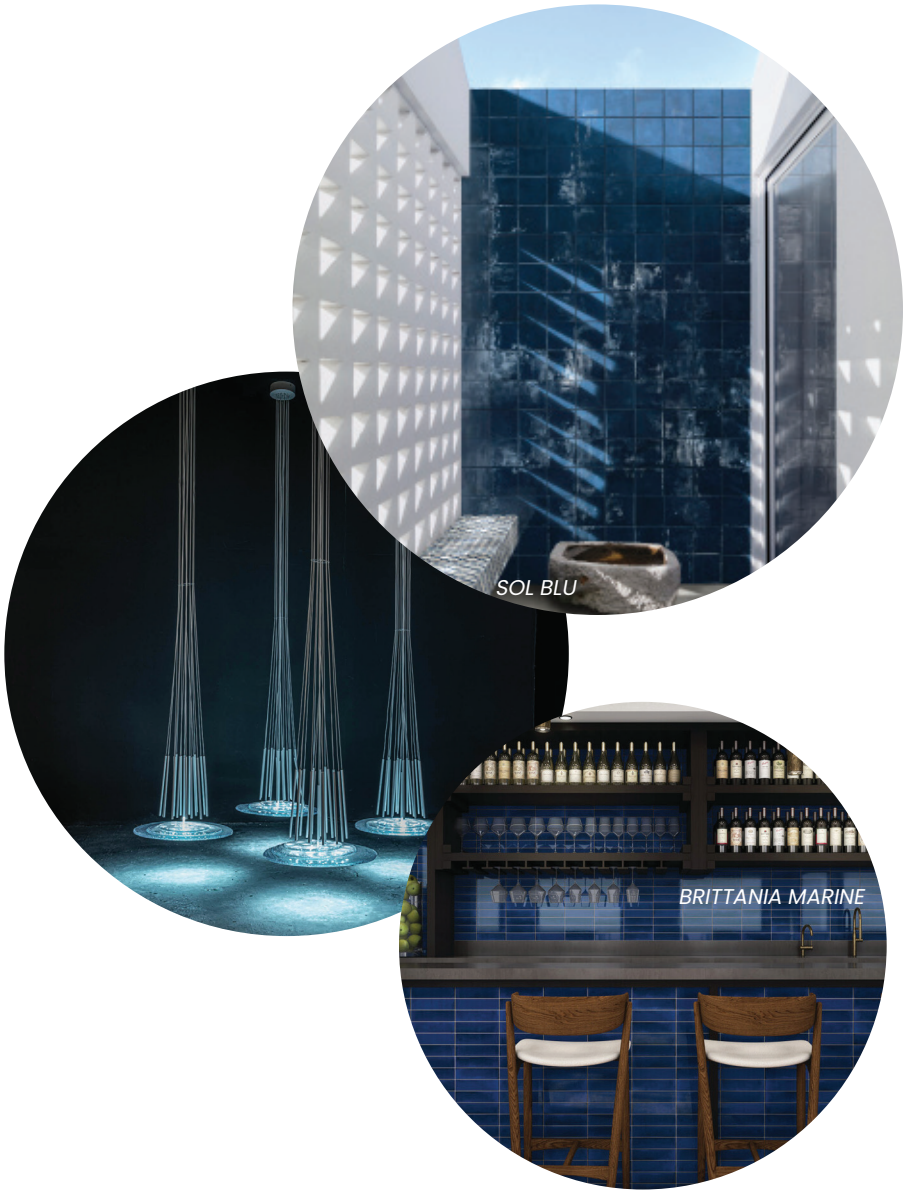
FLAUTI SKY



OUDH LAOS



MAND GRIGIO NORTH



“Blue is the invisible becoming visible. Blue has no dimensions, it is beyond the dimensions of which other colours partake.”  
-Yves Klein



*color moment:*  
**AOI BLUE**

Out of the cold coast comes oceanic blue, rich with the mysteries of the deep sea. This particular realm of blue will see a surge in 2023 and invoke our intuition and fluidity.

Now more than ever, we're aware of the imminent rising sea levels. As we enter the decade of Ocean Science, materials and designs are drawn to use cobalt and lapis as a beacon of support for environmental change and saving our oceans.





Fluted Calatatta Viola (top left)  
Riggiolo 04 (top right),







*trend:*

# FLUIDITY

Fluidity is all about our innate need to live in the moment as we move with the ebbs and flows and the impermanence of life. In 2023, we are striving to be more present and adaptable in a world that is anything but stagnant. Designers are drawn to the curves of fluted materials that are dimensional and interesting, building transient environments that feel welcoming yet flexible in a time where we all are looking to be anything but locked down.



ALTA MAREA SALVIA



*Colour Analysis:* When this trend isn't utilizing natural elements like calacatta marbles and woods, colors seem to be counterintuitive to the organic shapes of the materials and opt for a poppy selection of blue-greens and peaches. There is a surprising harmony between the natural curvature of materials and the bright hues.

# PALETTE BUILDING ✱

FLUIDITY



A. **SHIBUSA** BIANCO  
B. **I VARIEGATI** CENERE  
C. **CRESTE** BIANCO VITA ALTO  
D. **MAREA** SALVIA  
E. **LUCE** SILVER

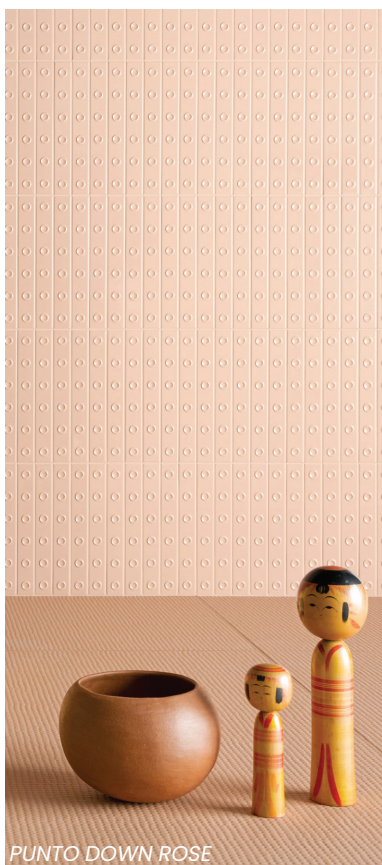
F. **PUNTO UP** ROSE GLOSSY  
G. **BLAZE DECOR** YELLOW  
H. **SEAMLESS** REVES BLEU  
I. **FIO.BISCUIT** WHITE  
J. **NORR 2.0** HAV 06



FIGO.BISCUIT & I VARIEGATI PECE



RIGGIOLE XL DECO 1



PUNTO DOWN ROSE



*On the cover: I VARIEGATI COTTO LOSANGO*

[WWW.STPTILE.COM](http://WWW.STPTILE.COM)