

COLORS



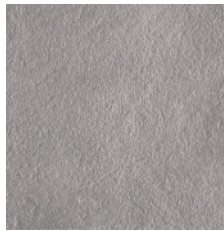
A



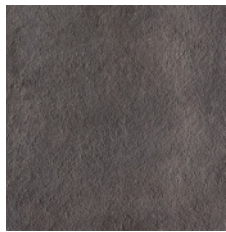
B



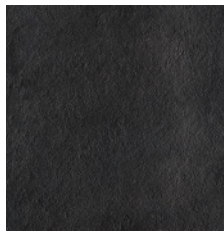
W



G

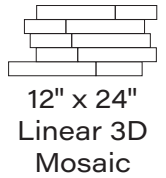
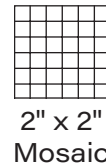
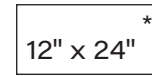
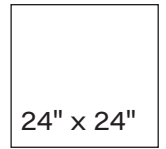
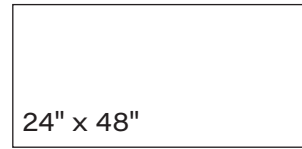
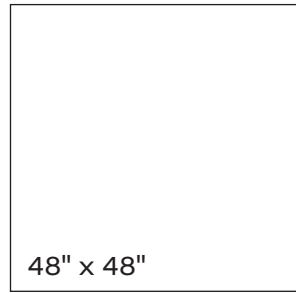


DG



N

AVAILABLE SIZES



*Size available in Matte Finish & Bush Hammered Finish

FINISH

MATTE RECTIFIED
LIGHT POLISHED RECTIFIED
BUSH HAMMERED

THICKNESS

9 mm

TRIM

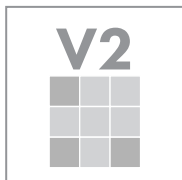
3.7" x 24" Bullnose
24" x 48" Stair Tread
13.1" x 48" Stair Step
13.1" x 48" Stair Step Corner

INSTALLATION & MAINTENANCE

Recommended Grout Size - 1/8"

For regular cleaning, use a neutral liquid detergent with a soft sponge or microfiber cloth. Persistent stains can be removed with a slightly abrasive sponge; if necessary, use a specially formulated stain remover.

TECHNICAL DATA



D.C.O.F.
(NATURAL)
> 0.60
ASTM C1028/96

WATER
ABSORPTION
≤ 0.1%
ISO 10545-3

CHEMICAL
RESISTANCE
UGL-GL
ISO 10545-13

FROST
RESISTANCE
RESISTANT
ISO 10545-12

BREAKING
STRENGTH
> 45 N/mm²
ISO 10545-4

DEEP
ABRASION
< 140 mm³
ISO 10545-6

CONCRETE PROJECT

